

1804 ALAQUA CREEK COVE

Swift Creek



850.678.9473 • www.RandyWiseHomes.com • 127 N. Partin Drive • Niceville, Florida 32578



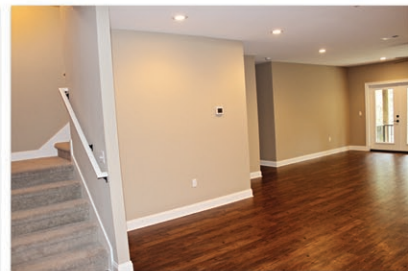
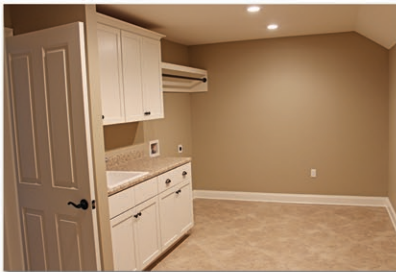
4,206 sq ft
5 BR / 3.5 Baths
\$649,990 • MOVE-IN READY MODEL

Don't miss this beautiful new, three level, walkout basement home on a private cul-de-sac homesite in Swift Creek. This home has plenty of space to spread out in with over 4,200 square feet, featuring 5 bedrooms and 3.5 baths. The main level has an open design and the master, and the upper level has 3 large bedrooms, an oversized utility room and a large bonus room. The lower level has a large, open entertaining area with full walk around wet bar, a full bath and a guest suite. You'll love the outdoors with the oversized deck above the walkout covered patio below. Swift Creek is a beautiful estate community, set in the rolling hills of Niceville. Come see our stunning new walkout basement home with brick hardy trim and our estate specifications.

Randy Wise Homes, Inc. is a locally owned general contracting company located in Niceville, Florida. Since 1977, they have provided building and remodeling services across Northwest Florida, including Niceville, Destin, Fort Walton Beach, Freeport, South Walton, Crestview and Baker. Randy Wise Homes specializes in new home construction and remodeling and has the prestigious designation as a Southern Living Custom Builder Member.

This one is a must see. Please call or stop in for details today!

**For details, please contact Craig Harley at
(850) 420-3322 or craig@randywisehomes.com**



LIC 0029913