

HILLSIDE

1929 Roaring Creek Way



850.678.9473 • www.RandyWiseHomes.com • 127 N. Partin Drive • Niceville, Florida 32578

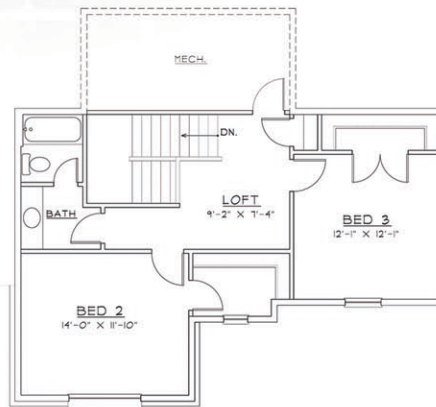


4477 Sq Ft • MLS #757626
3 BR (+ Flex Room) / 2.5 Baths
\$652,990 • COMING SOON

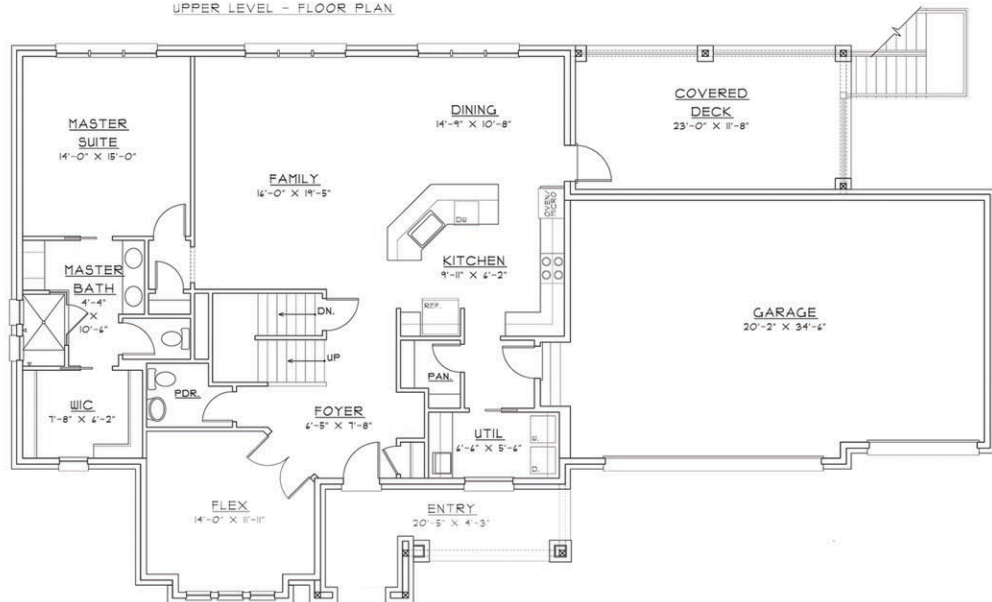
A beautiful new 'Treetops Series' home is getting ready to be built in Swift Creek. Call soon and contribute to the design details. This home has 4477 sq ft of heated and cooled space; 2489 complete and impeccably finished. It all starts with a stunning brick and hardy exterior, a large three car garage, circular driveway and an oversized lot with woods behind. As you enter, you will experience the quality this builder is known for; 10' ceilings in the main floor common areas with 8' doors, 5" crown molding and encased windows and entries throughout the home. Design details include hand scraped wood flooring, 20" porcelain, laid diagonally, custom built Woodharbor Shaker cabinets with granite tops, Frigidaire Professional appliances, and much more.

In the downstairs walkout, you'll have an added 1988+ sq ft of heated and cooled space. The area is pre-plumbed for an additional bathroom and a full wet bar but otherwise it's unfinished. You say the word and we can finish it for you at an additional cost. Wow, that's 4477 sq ft of living space!

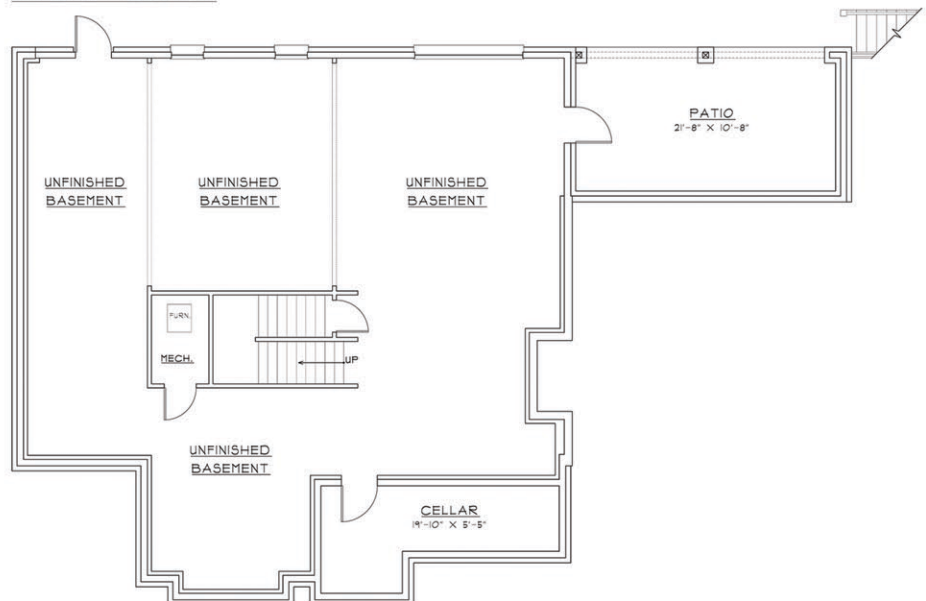
This builder has the prestigious designation as a Southern Living Custom Builder Member. Don't miss out on one of the final opportunities to build in Swift Creek.



UPPER LEVEL - FLOOR PLAN



MAIN LEVEL - FLOOR PLAN



LOWER LEVEL - FLOOR PLAN



LIC 0029913

For details, please contact Craig Harley at (850) 420-3322 or craig@randywisehomes.com