

time Tested.
relationship Driven.
stewardship Focused.SM



1,816 | THE LAUREL



1,816 / \$387,990

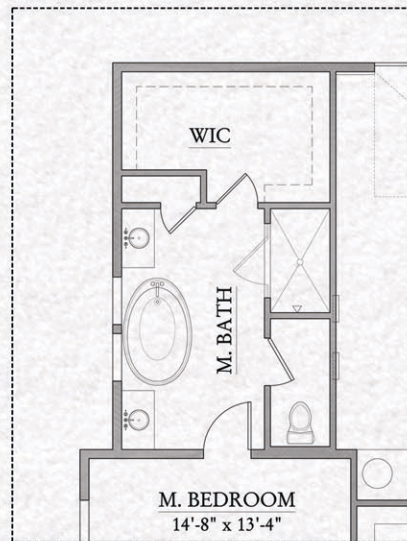
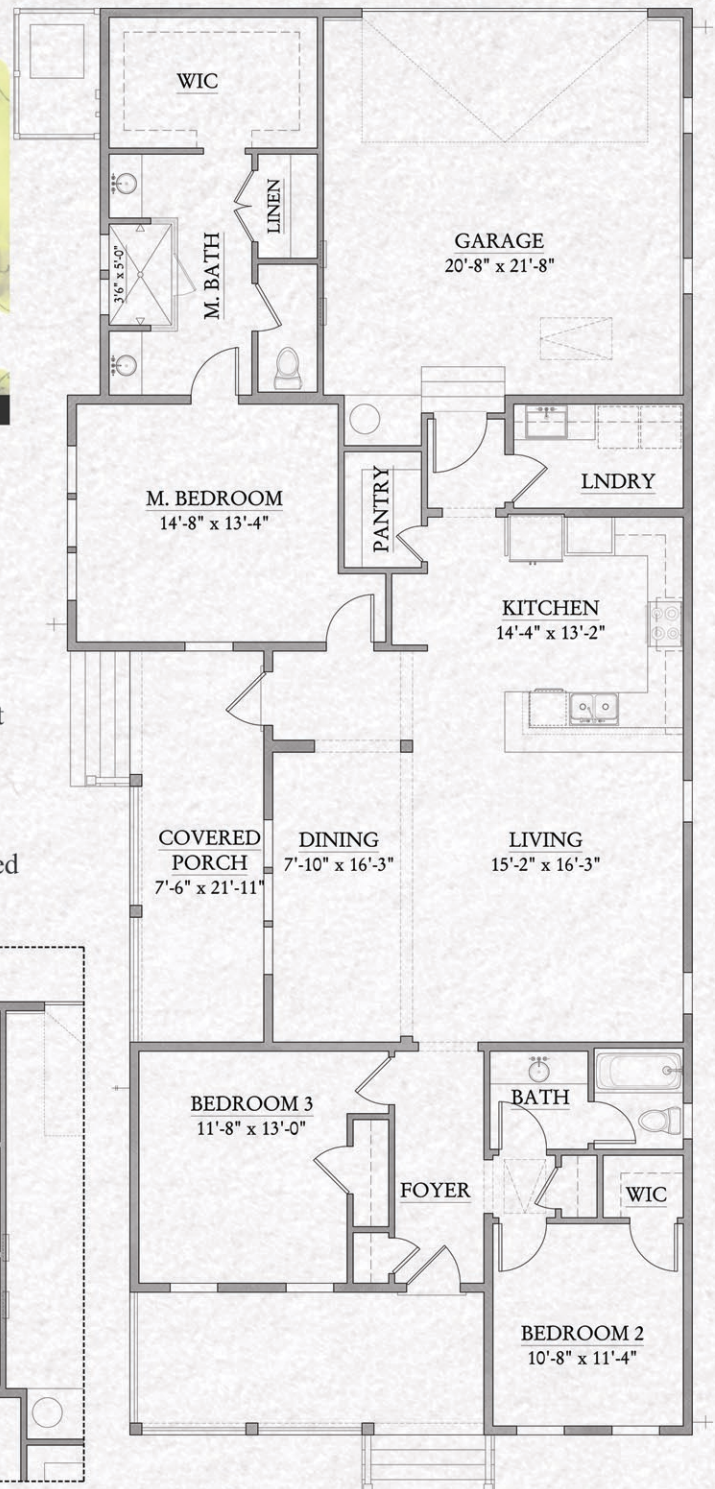
Square Feet Conditioned Area

3 BR/ 2 BA

We call this a Jewel Box, not overwhelmingly large but exquisitely appointed. Inside and out, this home offers details right out of Southern Living magazine. Picture walking by the rocking chairs on the front porch as you enter thru the 8' front door. Inside you'll find 10' ceilings, 8' doors, classic craftsman trim, and an open living area highlighted by a state of the art, oversized kitchen with Frigidaire Professional appliances, shaker cabinets, and a large dining nook overlooking the side porch and yard.

This home is designed for low maintenance, energy efficient, luxury living. *Please come visit Parkview Place, we'll sit on the porch and tell you all about it.*

For more information, please contact Craig Harley at (850) 420-3322 or craig@randywisehomes.com.



RG 0029913

Floor plans, elevations, prices, specifications and amenities are subject to change without notice. House plan drawings and any associated specifications and option lists are the property of Randy Wise Homes, Inc. Reproduction of these documents either in whole or in part, including any form of copying and/or preparation of derivative works thereof, for any reason, is strictly prohibited. Further, these documents are loaned strictly on condition that they will be returned to Randy Wise Homes, Inc. on demand and that the information they contain will be used solely in connection with the work being done performed by or specifically authorized by Randy Wise Homes, Inc. 1.23.16