

time Tested.  
relationship Driven.  
stewardship Focused.<sup>SM</sup>



## 15 FRONT PORCH CIRCLE | 2,006 | THE FERNWAY



**2,006 / \$434,990**

Square Feet Conditioned Area

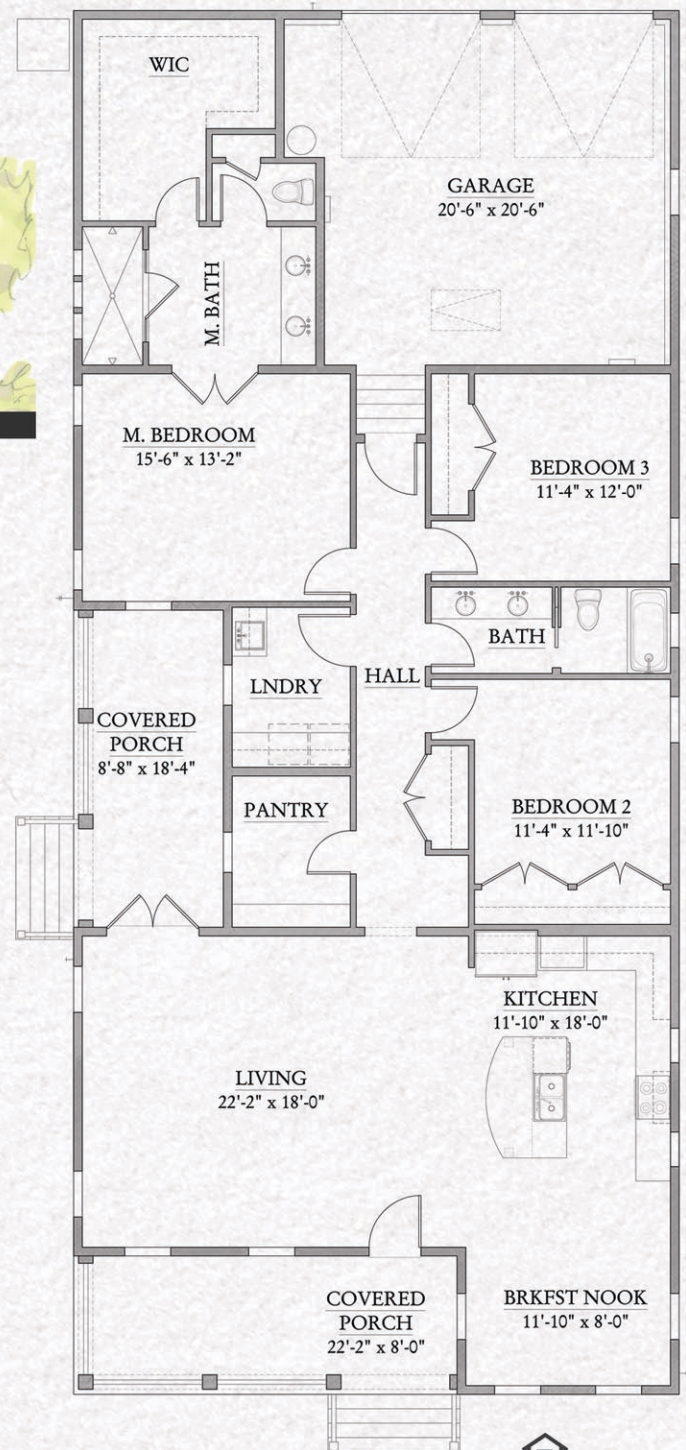
### 3 BR/ 2 BA

We call this a Jewel Box, not overwhelmingly large but exquisitely appointed. Inside and out, this home offers details right out of a magazine. Picture walking by the rocking chairs on the front porch as you enter thru the 8' solid Mahogany front door. Inside you'll find 10' ceilings with beam details, 8' doors, classic craftsman trim, and a state of the art, oversized kitchen with Frigidaire Professional appliances, white shaker cabinets, a large working pantry and a dining nook overlooking the park. This is where you'll spend your time, in the light and bright open living area with windows galore.

Outside, in addition to the front porch you'll enjoy a substantial, private, side porch with a paver patio. Use your imagination and create your vision for the space.

This home is designed for low maintenance, energy efficient, luxury living. ***Please come visit Parkview Place, we'll sit on the porch and tell you all about it.***

***For more information, please contact Craig Harley at (850) 420-3322 or [craig@randywisehomes.com](mailto:craig@randywisehomes.com).***



RG 0029913