

time Tested.
relationship Driven.
stewardship Focused.SM



1,816 | PLAN C | LOT 21

21 Front Porch Circle | \$422,990 | Model 1816
Move-In Ready!

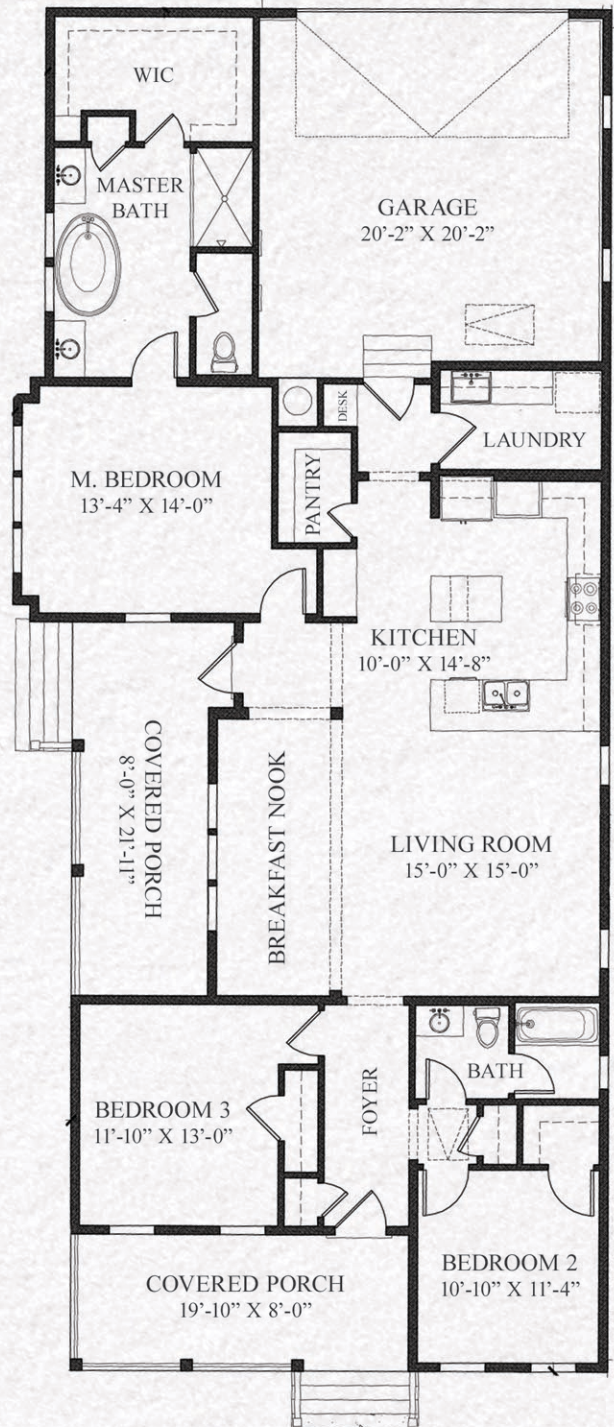
We call this a Jewel Box, not overwhelmingly large but exquisitely appointed. Inside and out, this home offers details right out of a magazine. Picture walking by the rocking chairs on the front porch as you enter thru the 8' solid Mahogany front door. Inside you'll find 10' ceilings, 8' doors, classic craftsman trim, a shiplap accent wall and an open living area highlighted by a state of the art, over-sized kitchen with Frigidaire Professional appliances, white shaker cabinets, a computer desk and a large nook overlooking the side porch and yard.

Have you always dreamed of the perfect master bath? You'll love the freestanding tub, shower with dual heads, shiplap wall and wood beams above.

Outside, in addition to the front porch you'll enjoy a substantial, private, side porch with a paver patio. Picture a quiet café on a side street in Europe. Use your imagination and create your vision for the space.

This home is designed for low maintenance, energy efficient, luxury living. Please come visit Parkview Place, we'll sit on the porch and tell you all about it.

**For details, please contact Craig Harley at
(850) 420-3322 or craig@randywisehomes.com**



RG 0029913

These drawings and any associated specifications and option lists are the property of Randy Wise Homes, Inc. Reproduction of these documents either in whole or in part, including any form of copying and/or preparation of derivative works thereof, for any reason, is strictly prohibited. Price subject to change without notice.